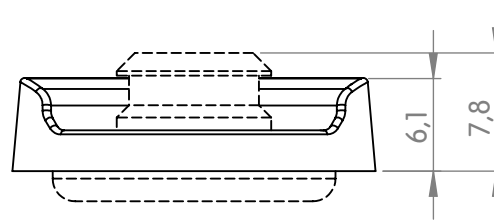
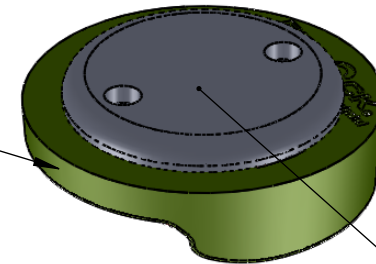
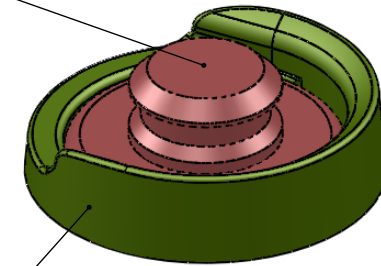


Snap male S screw  
(front)



Snap male S Addon Part



Snap male S screw  
(back thread)

Product	SNAP Male S Add On
Opening	Slide sideways. Opens only if alligned with female opening (180°)
Material	PA 66 GF
Colour	Black
Weight	1,20g
Load capacity	2 kg
General notes	Matches all Snap male S screw. Combination only with Snap female S screw (05100, 05200, 05103)

Article No	05003-000002(BLK)
Scale	2:1
Date	17.10.2016